

MALVERN CONCERT CLUB

FOUNDED 1903 BY SIR EDWARD ELGAR OM

SEPTEMBER 2026 – MAY 2027

124th Season of
Outstanding Chamber Music

JUNE 2027

Brodsky Quartet
Late Beethoven Cycle

At Malvern Theatres

Welcome To Our 124th Season

We try always to offer you as complete a range of chamber music as we can, and this is again our aim in the coming season. From the world-renowned King's Singers, via the light touch of Jess Gillam with Far Flung Trio and an unusual trio recital, to a welcome return for Ensemble 360, it is a programme to whet the appetite.

We are all painfully aware of rising prices, and inevitably the costs of engaging artists and mounting concerts have again increased significantly. However, for those booking all seven main season concerts, we have held ticket price increases to £1 per concert, and membership still offers a very substantial saving on box office prices – it remains exceptional value for the quality of music provided.

Finally, what makes this season extra special is a weekend in June 2027 when our old friends the Brodsky Quartet will play all of Beethoven's late quartets, arguably the most profound expressions of chamber music ever conceived. This is not part of our standard membership package, but members will still benefit from a significant saving on box office prices.

I do hope you enjoy the season.

Richard Price – MCC Chairman

OUR 2026-27 SEASON AT A GLANCE

<i>Sunday 20 September 2026</i> 7.30pm	The King's Singers
<i>Sunday 18 October 2026</i> 3.00pm	Jess Gillam with the Far Flung Trio
<i>Sunday 15 November 2026</i> 3.00pm	Leon McCawley
<i>Sunday 17 January 2027</i> 3.00pm	Maxwell Quartet
<i>Sunday 21 February 2027</i> 3.00pm	Robert Plane, Rosalind Ventris and Finghin Collins
<i>Sunday 18 April 2027</i> 7.30pm	Ensemble 360 Octet
<i>Sunday 16 May 2027</i> 7.30pm	Steven Isserlis and Connie Shih
<i>Friday 4 and Saturday 5 June 2027</i>	Brodsky Quartet

Join Us As A Member

Besides their very high quality, offering the chance to hear both established international artists and exciting young musicians making names for themselves, our concerts offer members exceptional value for money.

Membership is now even more flexible – choose any 6 main season concerts for **£111**, or all 7 dates for **£126**.

Membership is available to full time students at **£49** for all 7 main concerts.

A membership subscription for the season offers these benefits:

- One free ticket to each concert for an under-18
- The freedom to transfer your ticket to someone else
- The opportunity to participate in Club affairs

If you are joining as a new member, please apply online at malvern-concert-club.co.uk if possible, although you can use the membership form on **page 15** if you prefer.

For new members, or those returning after a gap of at least a year, options are available to choose a reduced series of 3, 4 or 5 concerts. Please see **page 15** for details.

Single tickets for non-members, available from the Malvern Theatres box office, will be priced **£30.50** for main season concerts (or **£34.16** without Malvern Theatres membership). Book online at malvern-theatres.co.uk or on **01684 892277**.

The latest information on each concert and membership is at malvern-concert-club.co.uk

The seating at all concerts is unreserved. Members' tickets are transferable to another person for the same date.





Sunday 20 September 2026 7.30pm

The King's Singers

Peter Hicks and Edward Button countertenor

Julian Gregory tenor – **Joseph Edwards** and

Nick Ashby baritone – **Piers Connor Kennedy** bass

Such Stuff As Dreams Are Made On The Romantic impulse spread like wildfire across Europe during the 19th and early 20th centuries. *Lieder*, *chansons* and part songs - imbued with musical richness - became vehicles for the deepest expressions of human feeling, desire and fantasy. This programme pays tribute to many of the greatest European composers of Romantic vocal music from that time: extraordinary storytellers who include Elgar and Vaughan Williams in England, Hugo Alfvén in Sweden, Fanny and Felix Mendelssohn in Germany, Schubert in Austria, and Debussy, Ravel and Saint-Saëns in France. The King's Singers honour their collective imagination and brave emotional vulnerability by creating a magical journey that explores some of their most compelling thoughts on life, love, nature, death, and even the supernatural.

The King's Singers have set the gold standard in *a cappella* singing on the world's greatest stages for over 55 years. They are renowned for their unrivalled technique, musicianship and versatility, which stem from the group's rich heritage and its drive to bring an extraordinary range of new and unique works, collaborations and recordings to life. The King's Singers' extensive discography has led to numerous awards including two Grammys, an Emmy and a place in Gramophone magazine's inaugural Hall of Fame.

The King's Singers were officially formed in 1968 when six recent choral scholars from King's College, Cambridge gave a concert at London's Queen Elizabeth Hall. By chance, the group comprised two countertenors, a tenor, two baritones and a bass, and they have kept this formation ever since. Growing the global canon of choral music has always been one of their key aims, and The King's Singers have now commissioned more than 300 works by many of the most prominent composers of the 20th and 21st centuries. All this new music joins their body of bespoke *a cappella* arrangements, including many by King's Singers past and present.

Alongside their demanding performing and recording schedule – with over 100 concerts worldwide every season – the group leads educational workshops and residential courses worldwide, working with ensembles on their approaches to group singing. To mark their 50th anniversary in 2018 they founded The King's Singers Global Foundation (based in the USA) to provide a platform to support the creation of new music across multiple disciplines, to coach a new generation of performers, and to provide musical opportunities to people of all backgrounds.



Sunday 18 October 2026 3.00pm

Jess Gillam saxophone

with Far Flung Trio: Katherine Hunka violin,

Dermot Dunne accordion and Malachy Robinson double bass



Following their appearance for us in 2024 we welcome back Far Flung Trio, who are delighted to be joined by saxophonist Jess Gillam. They captivate audiences with a mix of virtuosity and playfulness, tradition and innovation. For this concert they will bring virtuoso pieces such as Saint-Saëns' *Introduction and Rondo Capriccioso* and gems from their *Umbrellas* album.

Jess Gillam is a celebrated saxophonist and presenter. With her electrifying performances, vibrant stage presence and magnetic personality, she has been invited to play on the world's major stages since becoming in 2018 the youngest ever soloist to perform at the Last Night of the Proms. She is equally at home behind the microphone, and her award-winning weekly show *This Classical Life* on BBC Radio 3 is now in its seventh season. In 2016 Jess made history when she became the first saxophonist to reach the finals of *BBC Young Musician of the Year*. She has been the recipient of a Classic BRIT Award, a *Times* Breakthrough Award nominee, and was awarded an MBE in the Queen's Birthday Honours list 2021 for services to music.

Katherine Hunka was leader of the Irish Chamber Orchestra for 26 years. She directed performances worldwide from the violin, played concertos and premieres and collaborated with many extraordinary musicians. As well as with the Far Flung Trio Katherine is a busy chamber musician, performing across Ireland and the UK. Her Solas Quartet champion female composers and have performed several of Katherine's own compositions. She is a mentor to young musicians and is currently a lecturer at the MTU Cork School of Music and artistic director of ConCorda, a chamber music programme for young musicians.

Dermot Dunne has pioneered his instrument in Ireland and has premiered 40 works written for the accordion. He is a regular at Irish and international concert halls and festivals. Performance highlights include the BBC Last Night of the Proms from Belfast, and chamber music with violinist Pekka Kuusisto and cellist Natalie Klein. He has been a regular soloist with the Irish Chamber Orchestra and accompanied them on their tour to China and Singapore.

Malachy Robinson is a prize-winning graduate of London's Guildhall School and holds a Masters degree in Historical Musicology from the University of London. He is principal double bass with the Irish Chamber Orchestra. Malachy is active as a composer of music and singer of songs, and as a player of banjo and viola da gamba. He is a faculty member at the Royal Irish Academy of Music, specialising in historical performance.



Sunday 15 November 2026 3.00pm

Leon McCawley piano



Mozart Sonata in G, K283

Fanny Mendelssohn Nocturne in G minor, H337

Beethoven Sonata in C, Op.2 No.3

Grieg Ballade in G minor, Op.24

Fauré Nocturne No.4 in E flat, Op.36

Chopin Ballade in A flat, Op.47

Praised for his unfailingly communicative playing, British pianist Leon McCawley has been delighting audiences worldwide since winning, in 1993, first prize at the International Beethoven Piano Competition in Vienna and second prize at the Leeds International Piano Competition. His many concert performances and extensive discography have established him as a pianist of great integrity and variety, bringing freshness and vitality to classical, romantic and 20th century repertoire.

Notable solo recitals in past seasons include Wigmore Hall (where he is a regular performer and in the 2021/22 season was Artist in Residence), International Piano Series at London's Southbank Centre, Hong Kong Arts Festival, New York's Lincoln Center, Singapore International Piano Festival and Piano Visions series at the Academy of Fine Arts in Stockholm. He can frequently be heard on BBC Radio 3 both in performance and interview, with recent broadcasts including In Tune, Wigmore Hall Lunchtime Series and Performance on 3.

As a concerto soloist, Leon performs with many of the leading British orchestras. He has made several appearances at the BBC Proms. Further afield he has made concerto appearances with, amongst others, the Cincinnati, Dallas, RTÉ National and St. Petersburg Symphony Orchestras, the Malaysian and Netherlands Philharmonic Orchestras and the Philadelphia Orchestra.

Leon studied at Chetham's School of Music, Manchester with Heather Slade-Lipkin before continuing his studies at the Curtis Institute of Music, Philadelphia with Eleanor Sokoloff. He also received invaluable guidance from Nina Milkina in London. He has been professor of piano at London's Royal College of Music since 2008. He is married to the painter Anna Hyunsook Paik.



Sunday 17 January 2027 3.00pm

Maxwell Quartet



Colin Scobie violin
Elliott Perks viola

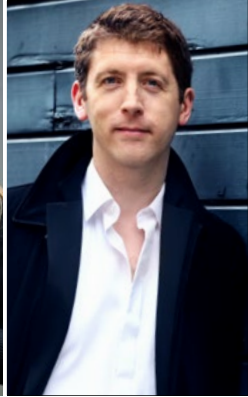
George Smith violin
Duncan Strachan cello

Haydn Quartet in C, Op.20 No.2
Prokofiev String Quartet No.2 in F, Op.92
Eleanor Alberga String Quartet No.4
Maxwell Quartet Folk music of Scotland

The Maxwell Quartet combines a refined approach to classical works with a passion for its own folk heritage and a commitment to expanding the string quartet repertoire through wide-ranging projects. Friends since they met playing in youth orchestras in Scotland, the players' tight bond shows through in compelling musical interpretations and their joyous communication with audiences. Strongly connected to its own Scottish roots, the group often performs classical repertoire and new music alongside folk-inspired works.

The quartet performs at UK venues such as Wigmore Hall, Purcell Room, Queen's Hall, Edinburgh, and Perth Concert Hall, and across Europe, including at Berlin Konzerthaus, Concertgebouw Amsterdam, Tivoli Copenhagen, Muziekgebouw Amsterdam, and Rheingau, Just Klassik, Wonderfeel, Lammermuir, and St Magnus festivals. Since its debut American tour in 2019, which sold out venues in New York, Florida, California and Washington, the quartet has toured the US annually. In the 2025–26 season it makes its debuts at Carnegie Hall and The Frick Collection in New York.

The group formed officially in 2010 as postgraduate students at the Royal Conservatoire of Scotland, and a year later were named as Residency Artists for Enterprise Music Scotland, 2011–13. They have since held residencies at Oxford University, Perth Concert Hall, Music at Paxton and the Lammermuir Festival. They founded their own Loch Shiel festival in the West Highlands of Scotland, curated a concert series at Guardswell Farm in Perthshire, and serve as Artistic Directors of the Mendelssohn on Mull Festival. The quartet studied with the Endellion Quartet through a ChamberStudio mentorship programme at King's Place and privately with Hatto Beyerle, founding member of the Alban Berg Quartet, in Hanover.



Sunday 21 February 2027 3.00pm

Robert Plane clarinet

Rosalind Ventris viola

Finghin Collins piano



Rebecca Clarke *Prelude, Allegro and Pastorale*

Brahms Sonata for clarinet and piano in F minor, Op.120 No.1

Brahms Sonata for viola and piano in E flat, Op.120 No.2

Mozart Trio for clarinet, viola and piano in E flat, K498 *Kegelstatt*

Robert Plane makes frequent concerto appearances and has played Mozart's concerto worldwide. He has pursued a particular passion for British clarinet music, winning a Gramophone Award for his account of Finzi's concerto. He has performed and recorded with the Gould Piano Trio for thirty years and is also clarinetist of Ensemble 360. He was principal clarinet of BBCNOW for over twenty years and has held the same position with the CBSO and RNS. A respected teacher and educator, he is Head of Woodwind Performance at the Royal Welsh College of Music and Drama.

Rosalind Ventris has an international career as a soloist and chamber musician. Recent highlights include a solo recital at Wigmore Hall and a performance with the Kaleidoscope Chamber Collective at the Concertgebouw. Her debut solo album, *SOLA*, received great critical acclaim and was nominated for a *BBC Music Magazine* Award. She is currently Director of Music at the Yehudi Menuhin School, Artistic Director of the Cowbridge Music Festival, and Professor of Viola at the Guildhall School of Music and Drama. She was previously Director of Musical Performance and Performance Studies at Oxford University.

Finghin Collins was born in Dublin in 1977 and studied piano at the Royal Irish Academy of Music with John O'Connor and at the Geneva Conservatoire with Dominique Merlet. Winner of the Clara Haskil International Piano Competition in Switzerland in 1999, he performs all over the world with leading orchestras. In Ireland he is Artistic Director of the New Ross Piano Festival, Music for Galway and the Dublin International Piano Competition. In October 2017, the National University of Ireland conferred on him an honorary Degree of Doctor of Music, in recognition of his outstanding achievements.



Sunday 18 April 2027 7.30pm

Ensemble 360 Octet

Robert Plane clarinet – **Jonathan Davies** bassoon

Naomi Atherton horn – **Benjamin Nabarro** violin

Claudia Ajmone-Marsan violin – **Rachel Roberts** viola

Gemma Rosefield cello – **Enno Senft** double bass

Jörg Widmann Octet (2004)

Schubert Octet in F, D803

Formed originally in 2005 by Music in the Round as its Ensemble in Residence to continue the great legacy of the Lindsay Quartet, **Ensemble 360** now performs all over the UK and abroad, boasting a glowing reputation for the outstanding quality of its performances, the breadth of its work and its commitment to reaching new audiences. It is a versatile, mixed group of eleven musicians comprising five string players, five winds and piano, equally at home in the classics of chamber music as in more diverse and eclectic programming.

Ensemble 360 has served as the resident ensemble at Music in the Round's annual Sheffield Chamber Music Festival since 2006. Guest curators of the festival and collaborative partners have included Steven Isserlis, Helen Grime and Kathryn Stott. The 2025 edition of SCMF, curated by the players themselves to celebrate Ensemble 360's 20th anniversary, reflected the group's musical journey and evolution over that period.

To mark the 150th anniversary of the birth of composer Arnold Schoenberg, Ensemble 360 collaborated with soprano Claire Booth to perform and record their *Pierrot Portraits* programme. Concert performances included the Hatfield House Chamber Music Festival and Oxford International Song Festival, and the resulting disc (Onyx Classics) received critical acclaim across the press.

Recent highlights include returning to Hatfield House Chamber Music Festival, presenting the *Schubertiade* they curated for Martin Randall Travel, a residency in Tenerife at the Kirker Music Festival, and performances at Leamington Music Festival and Mananan Festival on the Isle of Man. In 2023 Ensemble 360's significant contribution to the UK's chamber music scene was acknowledged in a shortlisting for the Royal Philharmonic Society Ensemble Award.



Sunday 16 May 2027 7.30pm

Steven Isserlis cello Connie Shih piano

Beethoven Variations on *Ein Mädchen oder Weibchen*, Op. 66

Schumann Violin Sonata No.2, Op.121 (arr. Isserlis)

Schumann *Fantasiestücke* Op.73

Brahms Cello Sonata No.2 in F, Op.99

Steven Isserlis enjoys an international career as a soloist, chamber musician, author, educator, and broadcaster. He performs with the world's greatest ensembles and has given many world premieres. His award-winning discography includes the J S Bach suites and Beethoven's complete works for cello and piano, and he received Grammy nominations for his recordings of Haydn's concertos and Martinů's sonatas. His latest disc, recital repertoire based on the year 1851, was released in 2026.

As an author, his latest book is an acclaimed companion to the Bach cello suites, while his two books for children about music are among the genre's most popular. He has also authored a commentary on Schumann's *Advice for Young Musicians*. He was awarded a CBE in 1998. International recognition includes the Piatigorsky Prize (USA) and the Glashütte Original Music Festival Award (Germany). He plays the 1726 Marquis de Corberon Stradivarius, loaned by the Royal Academy of Music.

Connie Shih has been described as an exceptional artist. Her hallmarks are her impeccable pianism and outstanding ensemble skills. She made her orchestral debut with the Seattle Symphony Orchestra aged 9, and in 1993 was awarded the Sylva Gelber Prize for the most outstanding classical artist under the age of 30.

In addition to international performances as a soloist with orchestras she gives recitals worldwide, and as a chamber music partner she is sought after by many artists. She regularly performs with Steven Isserlis on the world's greatest stages and they have recorded much of the cello repertoire. Since 2022 she has been Professor of Piano and Piano Chamber Music at the Salzburg Mozarteum. She has given masterclasses at prestigious music institutes and was a lecturer at the Mozarteum Summer Academy, the Casalmaggiore International Festival and Musiktage am Rhein.



Brodsky Quartet

Krysia Osostowicz violin
Paul Cassidy viola

Ian Belton violin
Jacqueline Thomas cello

Friday 4 June 2027 7.30pm

J S Bach Sonata in G minor (for solo violin, arranged for quartet by Paul Cassidy)
Beethoven String Quartet No.12 in E flat, Op.127
Kraggerud *Preghiera*
Beethoven String Quartet No.15 in A minor, Op.132

Saturday 5 June 2027 3.00pm

J S Bach Sonata in A minor (arr. Cassidy)
Beethoven String Quartet No.16 in F, Op.135
Britten *Poeme*
Beethoven String Quartet Op.130 (revised version)

Saturday 5 June 2027 7.30pm

J S Bach Sonata in C (arr. Cassidy)
Beethoven String Quartet in B flat, Op.133 *Große Fugue*
Zebeljan *Dark Velvet*
Beethoven String Quartet No.14 in C sharp minor, Op.131

The Brodsky Quartet have been studying and performing the late quartets of Beethoven for 55 years. Back in 1972, when the group started, Op.130 was one of the first pieces on their stands. Despite being lambasted for their arrogance (young people cannot understand late Beethoven) they followed their hearts and stuck to their task. Turning perceived etiquette on its head, they learnt all the 'lates' before moving on to the early and middle period works. This lifelong journey has lent them a unique perspective on these sacred and revered works, considered by many to be the very pinnacle of classical music, and has equipped them with unparalleled experience in their execution.

The Brodsky Quartet Beethoven cycle is separate from the main concert subscription series. Members will enjoy priority and substantial savings on box office ticket prices, as well as a discount for booking all three concerts.

Members will be notified when ticket prices and availability have been finalised. Booking for members will be available online at malvern-concert-club.co.uk or by contacting Sue Beverly, Membership Secretary, whose details are on **page 14**. Full price tickets for non-members will be available from Malvern Theatres.

Where Our Concerts Are Held

Malvern Theatres, Grange Road, Malvern WR14 3HB

All concerts except the Coffee & Cake Concert



The Theatres

From its origin in 1885, Malvern Theatres has undergone many changes, and is now a modern, attractive and dynamic centre for the performing arts. While the Forum Theatre is being upgraded, all of this season's concerts will take place in the Festival Theatre, as they did from the mid-1970s to the mid-1990s.

For opening hours, and availability of refreshments etc, please refer to Malvern Theatres. Visit malvern-theatres.co.uk or call **01684 892277**.

Access

Malvern Theatres is wheelchair accessible, and wheelchair spaces with companion seats are available in prime locations. Accessible toilets are located near the stalls bar on the lower ground floor. Please contact the Malvern Theatres box office on 01684 892277 regarding specific access requirements, so that they can assist and advise accordingly.

Elmslie House, 8 Avenue Road, Malvern WR14 3AG

Coffee & Cake Concert – Friday 11 June 2027

Lara Johnson mezzo soprano & Tim Sidford piano

Elmslie House was built as *Falston* in 1862 by the architect E W Elmslie for his own family use. In later life the building was a school, and had associations with Elgar and Troyte Griffith. It now hosts classes, art exhibitions and concerts, including what will be the eighth of the Club's successful Coffee & Cake Concerts. Please bear in mind that this is a family home and therefore not open at all times.

Seating (all unreserved) is limited to 80. The ticket price of £18 will include refreshments before the concert, kindly provided by Anna Taylor, the owner of Elmslie House. Bookings will as usual be through the Club's Membership Secretary, Sue Beverly, whose details are on **page 14**.

Travel information

Car Parking Short-stay car parks, the Council House (Avenue Road) and Edith Walk; long-stay car parks in Priory Road and Victoria Road. Charges apply.

Trains Great Malvern Station for West Midlands Railway and Great Western Railway trains.

Information correct as at March 2026. Please check before travelling.



Malvern Concert Club wishes to thank:

- The management, staff and volunteers of Malvern Theatres for their invaluable support
- Advertisers in our concert programmes
- The Club members who assist with various tasks at concerts and behind the scenes

Malvern Concert Club *as at March 2026*

President Roderick Williams OBE

Vice Presidents Joseph Brand, Linda Jennings, Martin Knott, Michael Messenger OBE

Chairman Richard Price

Secretary Alison Hunka

Treasurer Ian Giddons

Membership Secretary Sue Beverly

Publicity Officer Simon Allen

Committee Members Janet Hay, Linda McKinley, Roger Usher

Steinway Model D concert grand piano (Hamburg, 2003) supplied by Hereford Cider Museum Trust, administered by Holy Trinity Church, Hereford

Piano tuning by Philip Kennedy Professional Piano Services, Hereford

Concert flower arrangements kindly provided by Malvern Flower Arranging Club

Photo credits:

Brodsky Quartet © Sarah Cresswell

Ensemble 360 © Matthew Johnson & Music in the Round

Finghin Collins © Frances Marshall

Far Flung Trio © Roni Sidhu

Jess Gillam © Sam Becker

King's Singers © Benjamin Ealovega

Steven Isserlis © Satoshi Aoyagi

Connie Shih © Bo Huang

Maxwell Quartet © Rich Watson

Leon McCawley © Anna Paik

Robert Plane © Andrei Luca

Rosalind Ventris © Oxford Atelier

Graphic Design by Mark Adkins

Printed by Print Plus, Hereford

Website designed and maintained by Nepeta Consulting Ltd

Artists and programmes are subject to change at short notice for reasons beyond the control of the Club

Malvern Concert Club is a Registered Charity, No. 506329



How to Apply for or Renew Membership

To qualify as a **NEW** or **RETURNING** member you cannot have been a member in the 2025-26 season.

EXISTING MEMBERS will automatically receive renewal information by email or post. There is no need to use the form opposite, although you can do so if you prefer.

APPLY OR RENEW ONLINE

New, returning or existing members can apply for or renew membership online, and pay, at **malvern-concert-club.co.uk**

APPLY OR RENEW BY POST

If you would prefer to complete a membership form and apply by post, please print the form or contact the Membership Secretary to request a brochure.

Please pay by one of the following methods:

- **Direct Bank Transfer:** the Membership Secretary will provide you with payment instructions
- **Cheque:** enclose with the form your cheque payable to Malvern Concert Club

Membership Enquiries: **07539 974228** or
membership@malvern-concert-club.co.uk

Membership subscriptions are only available direct from the Club, not from Malvern Theatres Box Office.

PLEASE NOTE:

- 1) Membership can be single or dual. Dual memberships are available to any two people, not necessarily living at the same address. The Club will use the address you provide for communication purposes.
- 2) Tickets for main season concerts purchased from the Malvern Theatres box office will be priced £30.50 (or £34.16 without Malvern Theatres membership).
- 3) Tickets for the Brodsky Quartet concerts on 4 & 5 June 2027 and the Coffee & Cake Concert on 11 June 2027 will be offered for sale nearer the concert dates and will be available through the Membership Secretary.
- 4) Membership is available to full time students at £49 for all 7 main concerts.
- 5) As a registered charity, Malvern Concert Club can reclaim tax on donations from current UK tax payers, thereby increasing the value of your donation by 25p for every £1 you donate. To allow us to do this, please request a Gift Aid declaration.

DATA PROTECTON (GDPR)

By submitting an application for membership of Malvern Concert Club ('the Club'), you consent to the information which you provide and any other information obtained or provided as part of the application process and during the course of your membership of the Club being used solely for the purpose of processing your application (including payment processing) and dealing with you as a member of the Club. This includes communicating with you about Club activities and events and the fulfilment of any purchases. The data you provide will not be shared with any third party for marketing or commercial purposes. To comply with the requirements of the Charity Commission the information you provide may be retained for a period of time as part of the Club's financial records, even if your membership of the Club has ceased. Your consent extends to meet this requirement.

Malvern Concert Club 124th Season 2026-27

MEMBERSHIP FORM

Name/s

Address

.....

..... Postcode

Phone (home or mobile)

Email

How did you hear about MCC?

MAIN SEASON EXCLUDES BRODSKY QUARTET AND COFFEE & CAKE CONCERTS

ALL SEVEN MAIN SEASON CONCERTS	£126
ANY SIX MAIN SEASON CONCERTS	£111

Optional part-season membership for **NEW** or **RETURNING** members only

ANY FIVE MAIN SEASON CONCERTS	£100
ANY FOUR MAIN SEASON CONCERTS	£90
ANY THREE MAIN SEASON CONCERTS	£78

If not booking all 7, please circle below the concerts to form your season package.

20 Sept King's Singers	18 Oct Gillam/ Far Flung	15 Nov McCawley	17 Jan Maxwell Quartet	21 Feb Plane Trio	18 Apr Ensemble 360	16 May Isserlis/ Shih
-------------------------------------	---------------------------------------	---------------------------	-------------------------------------	--------------------------------	----------------------------------	------------------------------------

SEASON MEMBERSHIP	NO. (1 OR 2)	TOTAL COST
A: Seven concerts at £126 per person		
B: Six concerts at £111 per person		
C: Part-season membership as indicated above		
D: Full time student 7 concerts at £49		
I wish to make an OPTIONAL DONATION (thank you) of		
TOTAL		£

PAYMENT METHOD

Direct Bank Transfer Cheque

I wish to Gift Aid my donation shown above and any donations made in the future by me to Malvern Concert Club. I am a UK taxpayer and understand that if I pay less Income Tax and/or Capital Gains Tax than the amount of Gift Aid claimed on all my donations in a tax year when I make a donation, it is my responsibility to pay any difference.

Signature.....

Date / /

Please notify the Membership Secretary if in future you wish to cancel this declaration.



MALVERN CONCERT CLUB

FOUNDED 1903 BY SIR EDWARD ELGAR OM

The King's Singers

Jess Gillam
with **Far Flung Trio**

Leon McCawley

Maxwell Quartet

Robert Plane,
Rosalind Ventriss
and **Finghin Collins**

Ensemble 360 Octet

Steven Isserlis
and **Connie Shih**

Brodsky Quartet